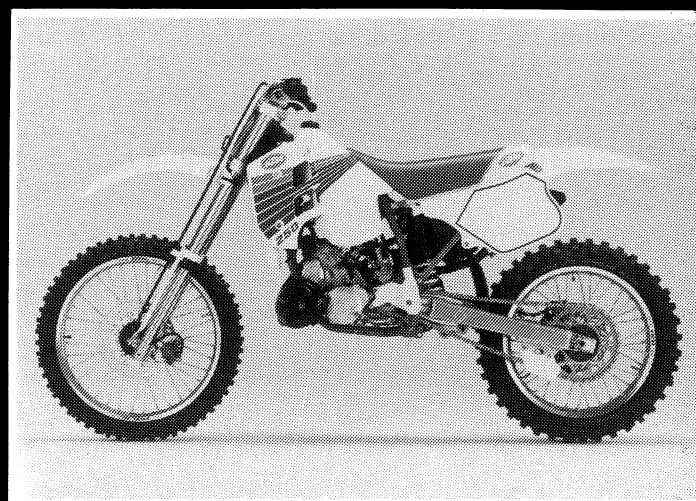


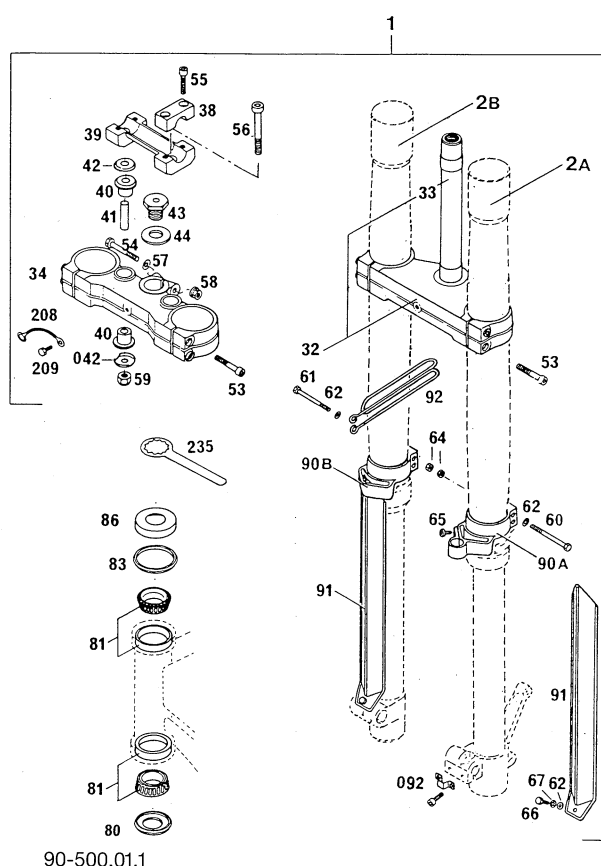


FAHRGESTELL
Chassis

250/300
MX / D-XC / E-XC / E-GS



▲ = NEUTEILE '90/NEW PARTS '90



90-500.01.1

TELEGABEL / FRONT FORK

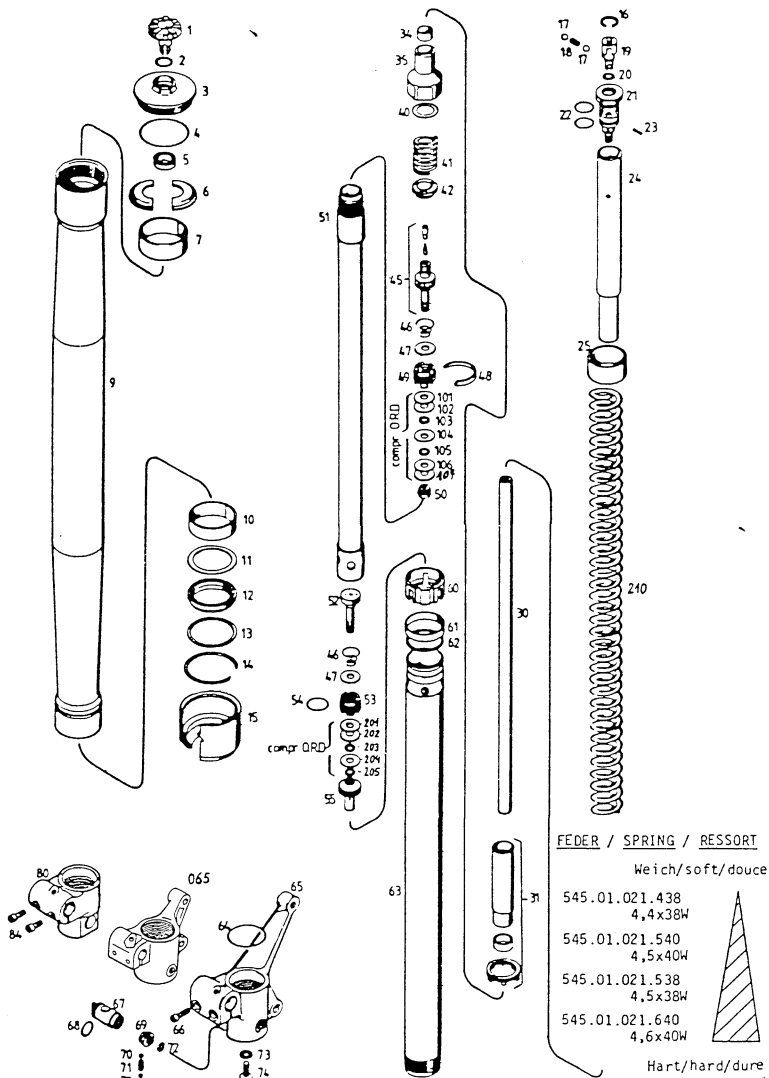
| Bild Fig. | Teilenummer Part number | Stk. Qty. | Bild Fig. | Teilenummer Part number | Stk. Qty. |
|-----------|--|-----------|-----------|-------------------------------|-----------|
| 1▲ | 502.01.001.744 K1 MX 90 125 MX | 1 | 2b▲ | 546.01.102.000 K2 MX 90 R/S | 1 |
| 1▲ | 502.01.001.844 K1 MX 90 US 125 MX USA | 1 | 2b▲ | 546.01.102.100 K2 MX 90 U R/S | 1 |
| 1▲ | 502.01.501.044 K1 GS 90 125 Enduro | 1 | 2b▲ | 546.01.602.000 K2 MX 90 R/S | 1 |
| 1▲ | 502.01.401.044 K1 GS 90 US 125 Enduro USA | 1 | 2b▲ | 565.01.602.000 K3 GS 90 R/S | 1 |
| 1▲ | 546.01.001.044 K2 MX 90 250 MX | 1 | 2b▲ | 565.01.102.800 K5 MX 90 R/S | 1 |
| 1▲ | 546.01.001.144 K2 MX 90 US 250 MX USA | 1 | 32 | 501.01.032.044 | 1 |
| 1▲ | 546.01.501.044 K2 GS 90 250 Enduro, 250 Enduro USA | 1 | 33 | 501.01.033.000 | 1 |
| 1▲ | 565.01.501.044 K3 GS 90 350 Enduro | 1 | 34 | 501310 | 1 |
| 1▲ | 565.01.401.144 K3-5 GS 90 US 350 Enduro USA | 1 | 38 | 564.01.038.000 | 2 |
| 1▲ | 565.01.001.844 K5 MX 90 500 MX | 1 | 39 | 564.01.039.000 | 1 |
| 1▲ | 565.01.001.944 K5 MX 90 US 500 MX USA | 1 | 40 | 564.01.040.000 | 4 |
| 2a▲ | 502.01.002.700 K1 MX 90 L/S | 1 | 41 | 564.01.041.000 | 2 |
| 2a▲ | 502.01.002.800 K1 MX 90 U L/S | 1 | 42 | 564.01.042.000 | 2 |
| 2a▲ | 502.01.502.000 K1 GS 90 L/S | 1 | 042 | 564.01.142.000 | 2 |
| 2a▲ | 502.01.402.000 K1 GS 90 L/S | 1 | 43 | 564.01.043.000 | 1 |
| 2a▲ | 546.01.002.000 K2 MX 90 L/S | 1 | 44 | 564.01.044.000 | 1 |
| 2a▲ | 546.01.002.100 K2 MX 90 U L/S | 1 | 53 | 0912 080353 | 8 |
| 2a▲ | 546.01.502.000 K2 MX 90 L/S | 1 | 54 | 0931 080503 | 1 |
| 2a▲ | 565.01.502.000 K2 MX 90 L/S | 1 | 55 | 0912 080303 | 4 |
| 2a▲ | 565.01.402.100 K3-5 GS 90 L/S | 1 | 56 | 0984 100652 | 2 |
| 2a▲ | 565.01.002.800 K5 MX 90 L/S | 1 | 57 | 0125 080003 | 1 |
| 2a▲ | 565.01.002.900 K5 MX 90 U L/S | 1 | 58 | 543.10.086.000 | 1 |
| 2b▲ | 502.01.102.700 K1 MX 90 R/S | 1 | 59 | 0985 100003 | 2 |
| 2b▲ | 502.01.102.800 K1 MX 90 U R/S | 1 | 60 | 0931 050403 | 2 |
| 2b▲ | 502.01.602.000 K1 GS 90 R/S | 1 | 61 | 0931 050453 | 2 |
| | | | 62 | 0125 050003 | 6 |
| | | | 64 | 0985 050003 | 4 |
| | | | 66 | 0933 050123 | 2 |
| | | | 67 | 0797 050003 | 2 |
| | | | 80 | 546.01.084.000 | 1 |
| | | | 81 | 542.01.081.000 | 2 |
| | | | 83 | 546.01.184.000 | 1 |
| | | | 86 | 542.01.086.000 | 1 |
| | | | 90a | 565.01.090.000 | 1 |
| | | | 90b | 565.01.190.000 | 1 |
| | | | 91 | 565.01.091.000 | 2 |
| | | | 92 | 543.01.092.000 | 1 |
| | | | 092 | 565.01.092.000 | 1 |
| | | | 208 | 571.01.008.000 | 1 |
| | | | 209 | 0933 060123 | 1 |
| | | | 235 | 542.12.035.000 | 1 |

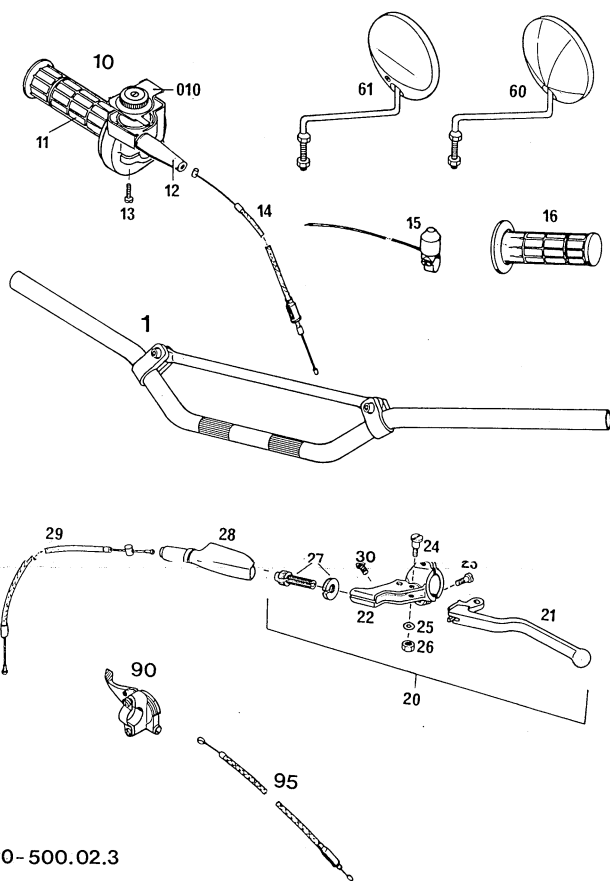
GABELBEINE / FRONT FORK LEGS

| Bild Fig. | Teilenummer Part number | Stk. Qty. | Bild Fig. | Teilenummer Part number | Stk. Qty. |
|--------------|----------------------------|--------------|--------------|----------------------------|--------------|
| 1 | 545.01.038.000 | 2 | 84 | 0912 060163 | 2 |
| 2 | 545.01.039.000 | 2 | 101 | 545.01.085.230 | X |
| 3 | 545.01.036.000 | 2 | | 6x10x0,3 | |
| 4 | 0770 430030 | 2 | 102 | 545.01.085.525 | X |
| 5 | 545.01.051.000 | 2 | | 6x18x0,25 | |
| 6 | 545.01.050.000 | 4 | 102▲ | 545.01.085.220 | X |
| 7 | 545.01.052.000 | 2 | | 6x16x0,2 | |
| 9 | 545.01.004.000 | 2 | 103 | 545.01.085.120 | X |
| 10 | 564.01.026.000 | 2 | | 6x9x0,2 | |
| 11 | 564.01.027.000 | 2 | 104 | 545.01.085.415 | X |
| 12 | 564.01.005.000 | 2 | | 6x16x0,15 | |
| 13 | 564.01.127.000 | 2 | 105▲ | 545.01.085.020 | X |
| 14 | 564.01.029.000 | 2 | | 6x8,5x0,2 | |
| 15 | 564.01.025.000 | 2 | 105 | 545.01.085.050 | X |
| 16 | 545.01.053.000 | 2 | | 6x8,5x0,5 | |
| 17 | 0401 050000 | 4 | 106 | 545.01.085.210 | X |
| 18 | 545.01.054.000 | 2 | | 6x12x0,1 | |
| 19 | 545.01.055.000 | 2 | 106 | 545.01.085.310 | X |
| 20 | 0770 060020 | 2 | | 6x14x0,1 | |
| 21 | 545.01.056.000 | 2 | 107 | 545.01.085.510 | X |
| 22 | 0770 160125 | 4 | | 6x18x0,1 | |
| 23 | 0481 020040 | 2 | 201 | 545.01.085.130 | X |
| 24 | 545.01.057.000 | 2 | | 6x9x0,3 | |
| 25 | 564.01.022.200 | 2 | 201▲ | 545.01.085.225 | X |
| | 2,5mm | | | 6x12x0,25 | |
| 25 | 564.01.022.000 | 2 | 202 | 545.01.085.320 | X |
| | 5mm | | | 6x14x0,2 | |
| 25 | 564.01.022.100 | 2 | 202▲ | 545.01.085.420 | X |
| | 10mm | | | 6x16x0,2 | |
| 30 | 545.01.010.000 | 2 | 202▲ | 545.01.085.425 | X |
| 31 | 545.01.058.044 | 2 | | 6x14x0,25 | |
| 34 | 545.01.061.000 | 2 | 203 | 545.01.085.520 | X |
| 35 | 545.01.062.000 | 2 | | 6x18x0,2 | |
| 40 | 545.01.063.000 | 2 | 203▲ | 545.01.085.625 | X |
| 41 | 545.01.009.000 | 2 | | 6x16x0,25 | |
| 42 | 545.01.064.000 | 2 | 203 | 545.01.085.540 | X |
| 45 | 545.01.067.044 | 2 | | 6x18x0,4 | |
| 46 | 545.01.068.000 | 4 | 204 | 545.01.085.015 | X |
| 47 | 545.01.069.000 | 4 | | 6x8,5x0,15 | |
| 48 | 545.01.070.000 | 2 | 204▲ | 545.01.085.010 | X |
| 49 | 545.01.071.000 | 2 | | 6x9x0,1 | |
| 50 | 545.01.072.000 | 2 | 204 | 545.01.085.610 | X |
| 51▲ | 545.01.073.100 | 2 | | 6x12x0,1 | |
| 52 | 545.01.074.000 | 2 | 205 | 545.01.085.415 | X |
| 53 | 545.01.075.000 | 2 | | 6x16x0,15 | |
| 54 | 0770 020160 | 2 | 205 | 545.01.085.030 | X |
| 55 | 545.01.076.000 | 2 | | 6x8,5x0,3 | |
| 60 | 545.01.077.000 | 2 | 206 | 545.01.085.015 | X |
| 61 | 545.01.045.000 | 2 | | 6x8,5x0,15 | |
| 62 | 545.01.046.000 | 2 | 206 | 545.01.085.110 | X |
| 63 | 545.01.003.000 | 2 | | 6x9x0,1 | |
| 64 | 0770 380020 | 2 | 207 | 545.01.085.510 | X |
| 65 | 545.01.006.000 | 1 | | 6x18x0,1 | |
| 65▲ | 545.01.206.000 | 1 | 210 | 545.01.021.438 | 2 |
| 66 | 0912 060253 | 2 | | 4,4x38W | |
| 67▲ | 545.01.078.100 | 2 | | 125 MX, 125 Enduro | |
| 68 | 0770 120020 | 4 | 210 | 545.01.021.538 | 2 |
| 69 | 545.01.079.000 | 2 | | 4,5x38W | |
| 70 | 0401 040000 | 4 | | 500 MX, 250 MX USA | |
| 71 | 545.01.080.000 | 2 | 210 | 545.01.021.540 | 2 |
| 72 | 0770 070020 | 2 | | 4,5x40W | |
| 73 | 545.01.081.000 | 1 | | 125 MX USA | |
| 74 | 545.01.082.000 | 2 | | 250 MX, Enduro | |
| 80 | 545.01.106.000 | 1 | | 250 Enduro USA | |
| | | | | 350 Enduro | |
| | | | | 545.01.021.640 | 2 |
| | | | | 4,6x40W | |
| | | | | 500 MX USA | |

X = NACH BEDARF / AS REQUIRED

FÜLLMENGE: ca. 500 cm STOSSDÄMPFERÖL SAE 7,5
 REZ 75 PRO GABELHOLM
 Oil Quantities: 500 cc shock absorber oil
 SAE 10 per fork leg



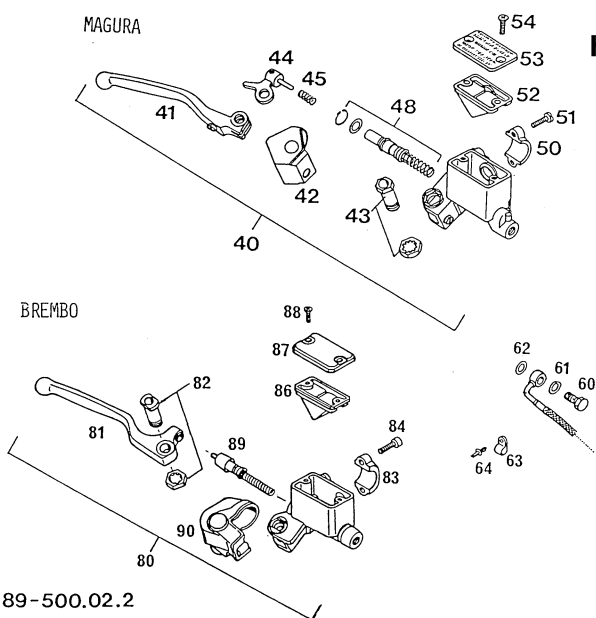


90-500.02.3

LENKER, ARMATUREN HANDLEBAR, CONTROLS

| Bild Fig. | Teilenummer Part number | Stk. Qty. | Bild Fig. | Teilenummer Part number | Stk. Qty. |
|-----------|--|-----------|-----------|-------------------------|-----------|
| 1 | 565.02.001.044 | 1 | 21 | 540.02.055.000 | 1 |
| 10 | 580.02.010.000 | 1 | 22▲ | 546.02.023.000 | 1 |
| 010 | 580.02.011.000 | 1 | 23 | 0964 050163 | 2 |
| 11 | 565.02.003.000 | 1 | 24 | 510.02.028.000 | 1 |
| 12 | 540.02.016.000 | 1 | 25 | 0125 060003 | 1 |
| 13 | 0084 050203 | 2 | 26 | 0934 060003 | 1 |
| 14 | 502.02.091.500 VHS B37 125 MX | 1 | 27 | 510.02.024.000 | 1 |
| 14 | 502.02.091.000 PHSB 35 125 Enduro | 1 | 28 | 510.02.026.000 | 1 |
| 14▲ | 546.02.091.000 KEIHIN 250 MX'90 | 1 | 29 | 502.02.090.000 125 | 1 |
| 14 | 501.02.091.000 PHBE 38 250/350 Enduro | 1 | 29▲ | 546.02.090.000 250 | 1 |
| 14 | 565.02.091.000 BING 38 350 Enduro | 1 | 29 | 565.02.090.000 350-540 | 1 |
| 14 | 500 02 591 100 VHSR 38 500 MX/540 D-XC | 1 | 30▲ | 546.02.029.000 | 1 |
| 15 | 510.11.198.000 | 1 | 60 | 120.12.025.100 | 1 |
| 16 | 565.02.052.000 | 1 | 61 | 544.12.025.028 | 1 |
| 20▲ | 546.02.040.000 | 1 | 90 | 520.02.059.000 | X |
| | | | 95 | 570.02.595.000 | X |

X = NACH BEDARF / AS REQUIRED



89-500.02.2

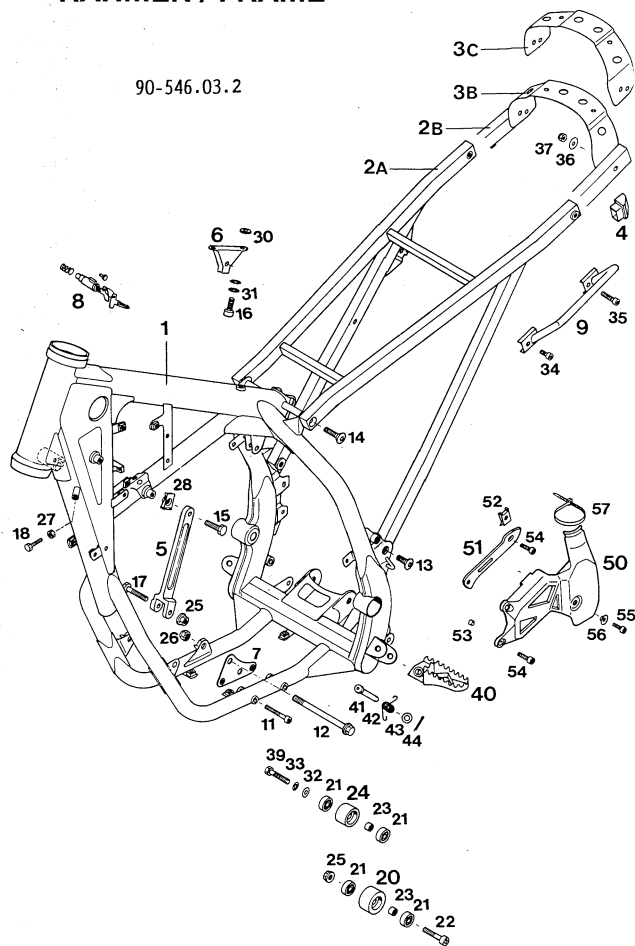
HANDBREMSZYLINDER / HANDBRAKE CYLINDER

| Bild Fig. | Teilenummer Part number | Stk. Qty. | Bild Fig. | Teilenummer Part number | Stk. Qty. |
|-----------|----------------------------|-----------|-----------|--------------------------|-----------|
| 40▲ | 565.13.001.644 MX Ø 10,5 | 1 | 60 | 502.13.025.000 | 1 |
| 40 | 565.13.001.544 Enduro Ø 11 | 1 | 61 | 420.12.226.000 10x16x1 | 1 |
| 41 | 565.13.020.500 | 1 | 62 | 420.13.026.000 10x16x1,5 | 1 |
| 42 | 565.13.026.500 | 1 | 63 | 570.13.070.100 | 1 |
| 43 | 565.13.015.500 | 1 | 64 | 570.13.071.000 | 1 |
| 44 | 565.13.051.500 | 1 | 80 | 545.13.001.044 | 1 |
| 45 | 565.13.052.500 | 1 | 81 | 544.13.020.000 | 1 |
| 48▲ | 565.13.050.600 MX Ø 10,5 | 1 | 82 | 544.13.015.000 | 1 |
| 48 | 565.13.050.500 Enduro Ø 11 | 1 | 83 | 544.13.011.000 | 1 |
| 50 | 565.13.011.500 | 1 | 84 | 0912 060203 | 2 |
| 51 | 0084 060203 | 2 | 86 | 544.13.009.000 | 1 |
| 52 | 565.13.009.500 | 1 | 87 | 544.13.012.000 | 1 |
| 53 | 565.13.012.500 | 1 | 88 | 0965 040123 | 2 |
| 54 | 0965 050163 | 2 | 89 | 544.13.050.100 | 1 |
| | | | 90 | 544.13.026.000 | 1 |

X = NACH BEDARF / AS REQUIRED

RAHMEN / FRAME

90-546.03.2

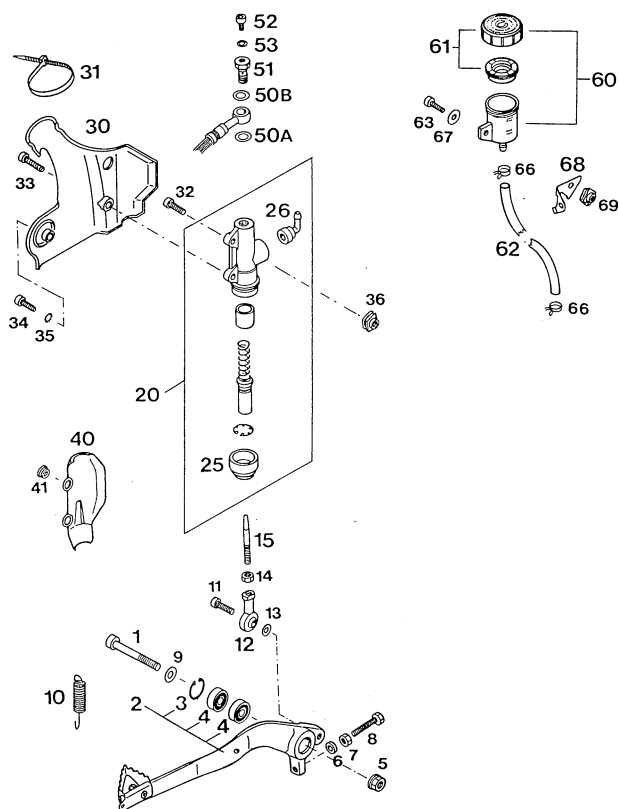


| Bild Fig. | Teilenummer Part number | Stk. Qty. |
|-----------|-------------------------------|-----------|
| 1▲ | 546.03.001.000 MX, D-XC, E-XC | 1 |
| 1▲ | 546.03.401.000 E-GS | 1 |
| 2a▲ | 546.03.002.000 MX, D-XC | 1 |
| 2b▲ | 546.03.202.000 E-XC, E-GS | 1 |
| 3b▲ | 546.03.206.000 E-XC | 1 |
| 3c▲ | 546.03.406.000 E-GS | 1 |
| 4▲ | 546.03.008.000 | 2 |
| 5▲ | 546.03.045.000 | 1 |
| 6▲ | 546.03.046.000 | X |
| 7▲ | 546.03.055.000 | 1 |
| 8 | 440.03.007.000 | 1 |
| 9 | 546.12.011.000 L/S | 1 |
| - | 546.12.111.000 R/S | 1 |
| 11 | 0912 060403 | 2 |
| 12▲ | 546.03.013.000 | 2 |
| 13▲ | 546.10.052.000 | 2 |
| 14 | 545.10.052.000 | 2 |
| 15 | 0931 080253 | 2 |
| 16 | 0912 060163 | X |
| 17 | 565.03.087.000 | 1 |
| 18 | 0933 060203 | 2 |
| 20 | 502.03.053.100 | 1 |
| 21 | 0625 006087 | 4 |
| 22 | 0912 080353 | 1 |
| 23 | 740.03.021.000 | 2 |
| 24 | 502.03.053.000 | 1 |

| Bild Fig. | Teilenummer Part number | Stk. Qty. |
|-----------|-------------------------|-----------|
| 25 | 543.10.086.000 | 2 |
| 26▲ | 543.10.086.100 | 2 |
| 27 | 0934 060003 | 2 |
| 28▲ | 546.03.048.000 | 1 |
| 30 | 120.11.016.000 | X |
| 31 | 502.33.041.000 | X |
| 32 | 0125 080003 | 1 |
| 33 | 0797 080003 | 1 |
| 34 | 0912 060123 | 2 |
| 35 | 0912 060353 | 2 |
| 36 | 0021 060003 | 2 |
| 37 | 0985 060003 | 2 |
| 39 | 0933 080303 | 1 |
| 40▲ | 546.03.040.000 L/S | 1 |
| - | 546.03.140.000 R/S | 1 |
| 41▲ | 546.03.044.000 | 2 |
| 42▲ | 546.03.041.000 | 2 |
| 43 | 0125 100003 | 2 |
| 44 | 0094 032253 | 2 |
| 50▲ | 546.07.061.000 | 1 |
| 51▲ | 546.30.061.000 14/15-Z | 1 |
| 51▲ | 546.30.061.013 13-Z | 1 |
| 52▲ | 546.03.048.100 | 1 |
| 53 | 544.31.032.050 | X |
| 54 | 0912 060163 | 2 |
| 55 | 0912 050203 | 1 |
| 56 | 502.13.161.000 | 1 |
| 57 | 440.11.076.200 | 1 |

X = NACH BEDARF / AS REQUIRED

FUSSBREMSBETÄTIGUNG REAR BRAKE CONTROL



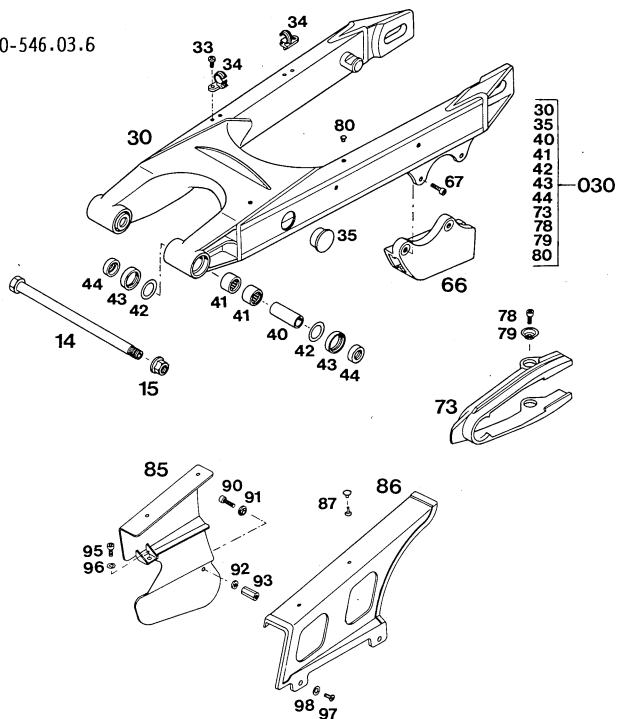
| Bild Fig. | Teilenummer Part number | Stk. Qty. |
|-----------|-------------------------|-----------|
| 1 | 0912 080603 | 1 |
| 2▲ | 546.03.060.044 | 1 |
| 3 | 0472 022150 | 1 |
| 4 | 0625 006087 | 2 |
| 5 | 543.10.086.000 | 1 |
| 6 | 120.11.016.000 | 1 |
| 7 | 0934 060003 | 1 |
| 8 | 0933 060353 | 1 |
| 9 | 0125 080003 | 1 |
| 10 | 130.03.062.000 | 1 |
| 11 | 0912 060203 | 1 |
| 12▲ | 546.03.069.000 | 1 |
| 13 | 0125 060003 | 1 |
| 14 | 0934 060003 | 1 |
| 15▲ | 546.03.068.000 | 1 |
| 20 | 545.13.101.044 | 1 |
| 25 | 545.13.151.000 | 1 |
| 26 | 545.13.155.000 | 1 |
| 30▲ | 546.13.038.000 | 1 |
| 31 | 440.11.076.200 | 1 |
| 32 | 0912 060203 | 1 |

| Bild Fig. | Teilenummer Part number | Stk. Qty. |
|-----------|--------------------------|-----------|
| 33 | 0912 060253 | 1 |
| 34 | 0912 050203 | 1 |
| 35 | 502.33.041.000 | 1 |
| 36▲ | 502.35.033.300 | 2 |
| 40 | 545.13.038.000 | X |
| 41 | 502.13.161.000 | X |
| 50a | 420.13.026.000 10x16x1,5 | 1 |
| 50b | 420.13.226.000 10x16x1 | 1 |
| 51 | 502.13.025.100 | 1 |
| 52 | 0912 050083 | 1 |
| 53 | 502.13.026.000 | 1 |
| 60 | 545.13.030.044 | 1 |
| 61 | 545.13.031.044 | 1 |
| 62 | 580.07.016.001 | 0,25 |
| 63 | 0912 050163 | 1 |
| 66 | 580.07.017.000 | 2 |
| 67 | 0021 050003 | 1 |
| 68▲ | 546.13.034.000 | X |
| 69 | 502.35.033.000 | 1 |

90-546.03.5

X = NACH BEDARF / AS REQUIRED

90-546.03.6

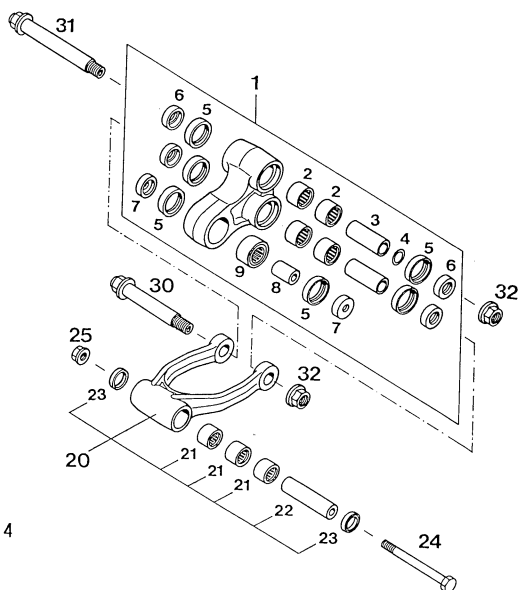


SCHWINGARM / SWINGARM

| Bild Fig. | Teilenummer Part number | Stk. Qty. | Bild Fig. | Teilenummer Part number | Stk. Qty. |
|--------------|----------------------------|--------------|--------------|----------------------------|--------------|
| 14▲ | 546.03.014.000 | 1 | 73▲ | 546.07.073.000 | 1 |
| 15▲ | 546.03.015.000 | 1 | 78 | 0912 060123 | 2 |
| 30▲ | 546.03.030.000 | 1 | 79 | 722.10.079.000 | 2 |
| | 250 '90 L=580 | | 80 | 546.03.235.000 | 3 |
| 030▲ | 546.03.030.044 | 1 | 85 | 546.07.260.000 | 1 |
| | 250 '90 L=580 | | 86 | 546.07.460.000 | 1 |
| 33 | 0010 050103 | 2 | 87 | 200.12.062.055 | 2 |
| 34▲ | 546.11.076.000 | 2 | 90 | 0912 060203 | 1 |
| 35▲ | 546.03.135.000 | 2 | 91 | 502.13.161.000 | 1 |
| 40▲ | 546.03.081.000 | 2 | 92 | 120.11.016.000 | 1 |
| 41▲ | 546.03.097.000 | 4 | 93 | 730.01.039.100 | 1 |
| 42▲ | 546.03.036.000 | 2 | 95 | 0912 050123 | 1 |
| 43▲ | 0760 253270 | 4 | 96 | 0125 050003 | 1 |
| 44▲ | 546.03.090.000 | 4 | 97 | 0010 050103 | 2 |
| 66▲ | 546.07.066.000 | 1 | 98 | 0021 050003 | 2 |
| 67 | 0912 060203 | 2 | | | |

X = NACH BEDARF / AS REQUIRED

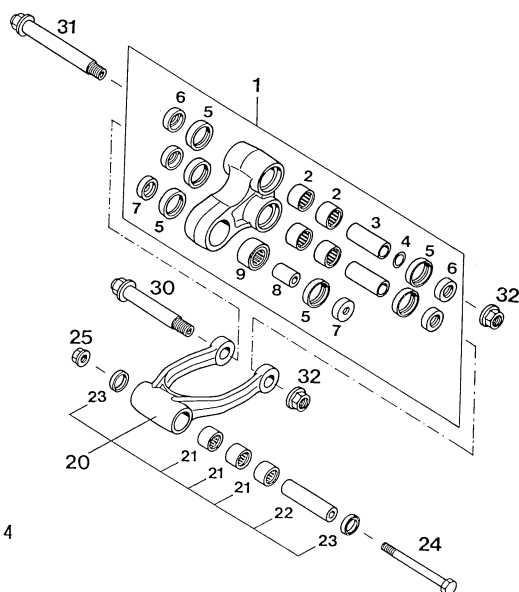
90-546.03.4



PRO-LEVER ANLENKUNG PRO-LEVER SYSTEM

| Bild Fig. | Teilenummer Part number | Stk. Qty. | Bild Fig. | Teilenummer Part number | Stk. Qty. |
|--------------|----------------------------|--------------|--------------|----------------------------|--------------|
| 1▲ | 546.03.080.044 | 1 | 8▲ | 546.03.086.000 | 1 |
| 2▲ | 546.03.097.000 | 4 | 9▲ | 546.03.197.000 | 1 |
| 3▲ | 546.03.081.000 | 2 | 20▲ | 546.03.083.044 | 1 |
| 4▲ | 546.03.090.010 | X | 21 | 565.03.094.400 | 3 |
| | 15,2×19×0,1 | | 22▲ | 546.03.084.000 | 1 |
| 4▲ | 546.03.090.020 | X | 23 | 0760 182442 | 2 |
| | 15,2×19×0,2 | | 24▲ | 546.03.087.000 | 1 |
| 4▲ | 546.03.090.030 | X | 25 | 490.09.082.000 | 1 |
| | 15,2×19×0,3 | | 30▲ | 546.03.182.050 | 1 |
| 5▲ | 0760 253270 | 6 | 31▲ | 546.03.082.050 | 1 |
| 6▲ | 546.03.090.000 | 4 | 32▲ | 546.03.015.000 | 2 |
| 7▲ | 546.03.085.000 | 2 | | | |

X = NACH BEDARF / AS REQUIRED



90-546.03.4

PRO-LEVER ANLENKUNG PRO-LEVER SYSTEM

| Bild Fig. | Teilenummer Part number | Stk. Qty. | Bild Fig. | Teilenummer Part number | Stk. Qty. |
|-----------|-------------------------|-----------|-----------|-------------------------|-----------|
| 1▲ | 546.03.080.044 | 1 | 8▲ | 546.03.086.000 | 1 |
| 2▲ | 546.03.097.000 | 4 | 9▲ | 546.03.197.000 | 1 |
| 3▲ | 546.03.081.000 | 2 | 20▲ | 546.03.083.044 | 1 |
| 4▲ | 546.03.090.010 | X | 21 | 565.03.094.400 | 3 |
| | 15,2×19×0,1 | | 22▲ | 546.03.084.000 | 1 |
| 4▲ | 546.03.090.020 | X | 23 | 0760 182442 | 2 |
| | 15,2×19×0,2 | | 24▲ | 546.03.087.000 | 1 |
| 4▲ | 546.03.090.030 | X | 25 | 490.09.082.000 | 1 |
| | 15,2×19×0,3 | | 30▲ | 546.03.182.050 | 1 |
| 5▲ | 0760 253270 | 6 | 31▲ | 546.03.082.050 | 1 |
| 6▲ | 546.03.090.000 | 4 | 32▲ | 546.03.015.000 | 2 |
| 7▲ | 546.03.085.000 | 2 | | | |

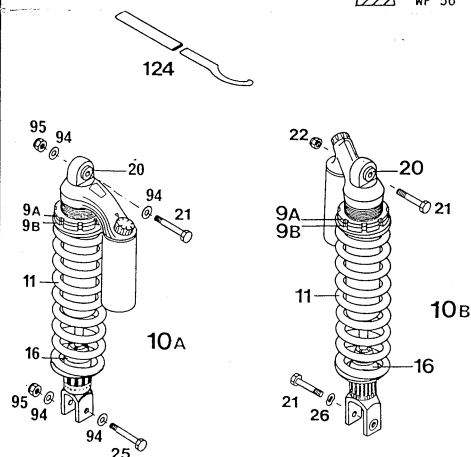
X = NACH BEDARF / AS REQUIRED

90-546.04.1

FEDERBEIN / SHOCK ABSORBER

FEDER / SPRING / RESSORT

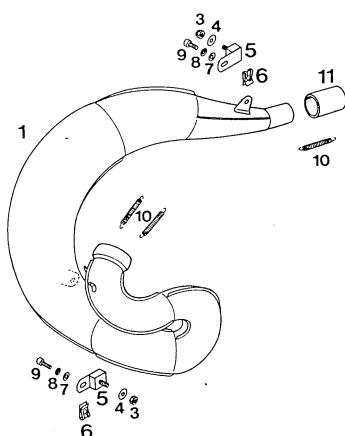
Weich/soft/douce WP 48
WP 50
WP 52
Hart/hard/dure WP 54
WP 56



| Bild Fig. | Teilenummer Part number | Stk. Qty. | Bild Fig. | Teilenummer Part number | Stk. Qty. |
|-----------|-------------------------------|-----------|-----------|-------------------------------|-----------|
| 9a | 542.04.109.000 | 1 | 10a | 565.04.110.000 K5 MX 90 WP-50 | 1 |
| 9b | 542.04.009.000 | 1 | | 500 MX | |
| 10a | 502.04.010.700 K1 MX 90 WP-46 | 1 | 10a | 565.04.110.100 K5 MX 90 WP-52 | 1 |
| | 125 MX | | | 500 MX USA, 540 D-XC | |
| 10a | 502.04.010.800 K1 MX 90 WP 48 | 1 | 11 | 501.04.011.046 WP 46 | 1 |
| | 125 MX USA | | 11 | 501.04.011.048 WP 48 | 1 |
| 10a | 502.04.110.000 K1 GS 90 WP 46 | 1 | 11 | 501.04.011.050 WP 50 | 1 |
| | 125 Enduro | | 11 | 501.04.011.052 WP 52 | 1 |
| 10a | 502.04.110.100 K1 GS 90 WP-48 | 1 | 16 | 544.04.016.000 | 1 |
| | 125 Enduro USA | | 20 | 542.04.020.000 | 1 |
| 10b▲ | 546.04.010.000 K2 MX 90 WP-48 | 1 | 21 | 565.03.086.000 | 1(2) |
| | 250 MX | | 22 | 543.10.086.100 | 1 |
| 10b▲ | 546.04.010.100 K2 MX 90 WP-50 | 1 | 25 | 565.03.093.000 | 1(-) |
| | 250 MX USA | | 26 | 0137 100003 | 1 |
| 10b▲ | 546.04.010.200 K2 MX 90 WP-48 | 1 | 94 | 565.03.096.000 | 4 |
| | 250 Enduro, 250 Enduro USA | | 95 | 0982 100003 | 2 |
| 10a | 565.04.110.200 K5 MX 90 WP-48 | 1 | 124 | 543.12.024.000 | 2 |
| | 350 Enduro | | | | |
| 10a | 565.04.110.300 K5 MX 90 WP-50 | 1 | | | |
| | 350 Enduro USA | | | | |

X = NACH BEDARF / AS REQUIRED

90-546.05.1

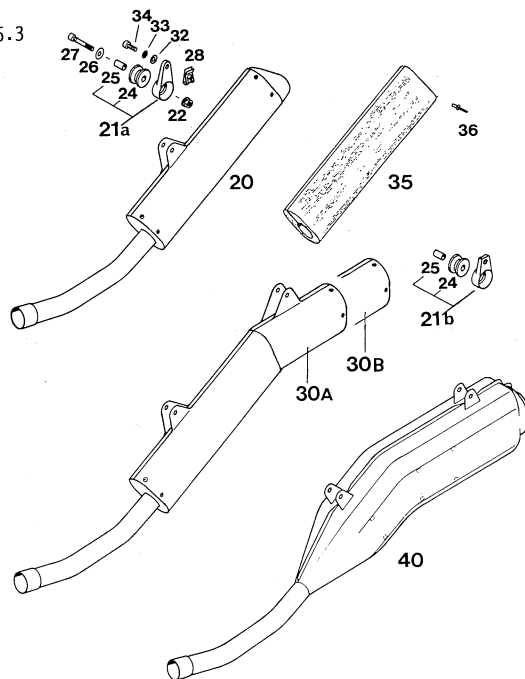


AUSPUFF / EXHAUST PIPER

| Bild Fig. | Teilenummer Part number | Stk. Qty. | Bild Fig. | Teilenummer Part number | Stk. Qty. |
|-----------|-------------------------|-----------|-----------|-------------------------|-----------|
| 1▲ | 546.05.070.000 | 1 | 5▲ | 546.05.262.000 | 2 |
| | MX, D-XC | | 6▲ | 546.03.048.100 | 2 |
| 1▲ | 546.05.270.000 | 1 | 7 | 0125 060003 | 2 |
| | E-XC | | 8 | 0797 060003 | 2 |
| 1▲ | 546.05.470.000 | 1 | 9 | 0912 060163 | 2 |
| | E-GS | | 10 | 510.05.063.000 | 3 |
| 3 | 0985 060003 | 2 | 11 | 543.05.057.000 | 1 |
| 4 | 0021 060003 | 2 | | | |

X = NACH BEDARF / AS REQUIRED

90-546.05.3

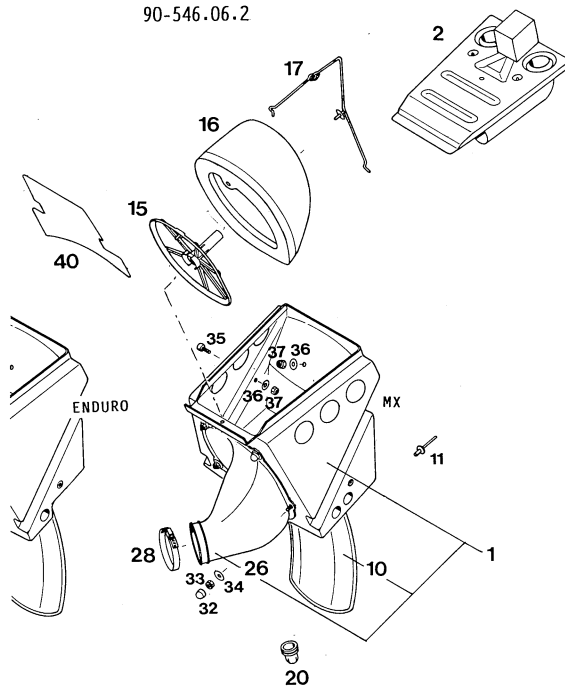


AUSPUFF-SCHALLDÄMPFER EXHAUST SILENCER

| Bild Fig. | Teilenummer Part number | Stk. Qty. | Bild Fig. | Teilenummer Part number | Stk. Qty. |
|-----------|-------------------------|-----------|-----------|-------------------------|-----------|
| 20▲ | 546.05.079.000 MX | 1 | 30a▲ | 546.05.279.044 E-XC | 1 |
| 20▲ | 546.05.179.000 D-XC | 1 | 30b▲ | 546.05.379.044 E-XC | 1 |
| 21a | 543.05.065.044 | 1 | 32 | 0125 060003 | 1(2) |
| 21b | 543.05.065.144 | 1 | 33 | 0797 060003 | 1(2) |
| 22 | 565.09.064.000 | 1(2) | 34 | 0912 060203 | 1(2) |
| 24 | 543.05.068.000 | 1(2) | 35 | 546.05.079.155 | 1(2) |
| 25 | 543.05.069.000 | 1(2) | 36 | 0011 401001 | 6 |
| 26 | 0021 060003 | 1(2) | 40 | 546.05.480.000 | 1 |
| 27 | 0912 060303 | 1(2) | | | |
| 28▲ | 546.03.048.100 | 1(2) | | | |

X = NACH BEDARF / AS REQUIRED

90-546.06.2

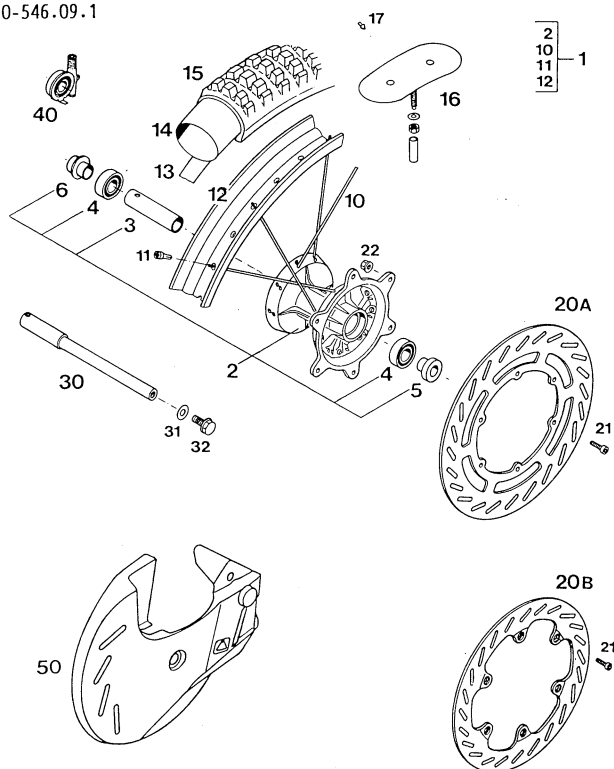


FILTERKASTEN / AIR FILTER BOX

| Bild Fig. | Teilenummer Part number | Stk. Qty. | Bild Fig. | Teilenummer Part number | Stk. Qty. |
|-----------|---------------------------------------|-----------|-----------|--|-----------|
| 1▲ | 546.06.001.000 MX, D-XC | 1 | - ▲ | 546.06.125.000 Boot attachment outside | 1 |
| 1▲ | 546.06.501.000 E-XC, E-GS | 1 | 28 | 550.06.028.000 | 1 |
| 2▲ | 546.06.002.044 E-GS | 1 | 32▲ | 546.06.021.000 | 5 |
| 10 | 546.06.010.000 | 1 | 33 | 0985 050003 | 5 |
| 11 | 432.06.043.000 | 3 | 34 | 0021 050003 | 5 |
| 15▲ | 546.06.016.000 | 1 | 35 | 0912 060163 | 1 |
| 16▲ | 546.06.015.000 | 1 | 36 | 0021 060003 | 2 |
| 17▲ | 546.06.017.000 | 1 | 37 | 0985 060003 | 2 |
| 20 | 502.06.020.000 | 1 | 40▲ | 546.06.033.000 | 1 |
| 26▲ | 546.06.026.000 | 1 | | | |
| - ▲ | 546.06.025.000 Boot Attachment inside | 1 | | | |

X = NACH BEDARF / AS REQUIRED

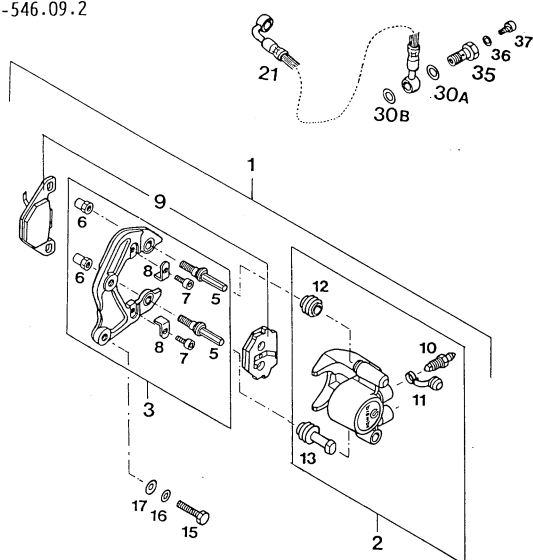
90-546.09.1

**VORDERRAD / FRONT WHEEL**

| Bild Fig. | Teilenummer Part number | Stk. Qty. | Bild Fig. | Teilenummer Part number | Stk. Qty. |
|-----------|--|-----------|-----------|----------------------------------|-----------|
| 1▲ | 546.09.001.144 Excel MX 1,60×21" | 1 | 15 | 501.09.074.200 90/90-21" MXR 299 | 1 |
| 1▲ | 546.09.001.044 Nordisk Enduro 1,60×21" | 1 | 15▲ | 546.09.074.000 80/100-21" DUNLOP | 1 |
| 2 | 565.09.010.644 | 1 | 16 | 510.09.100.100 | 1 |
| 3 | 565.09.011.400 | 1 | 17 | 550.09.099.100 | 10 |
| 4 | 0625 060037 | 2 | 20a | 565.09.060.600 MX 260 Ø | 1 |
| 5 | 565.09.051.400 | 1 | 20b | 565.09.060.500 Enduro 240 Ø | 1 |
| 6 | 565.09.052.600 | 1 | 21 | 0912 060166 | 6 |
| 10▲ | 546.09.071.000 | 36 | 22 | 565.09.064.000 | 6 |
| 11 | 565.09.072.000 | 36 | 30 | 565.09.081.000 | 1 |
| 12▲ | 546.09.070.100 Excel MX 1,60×21" | 1 | 31 | 0125 100003 | 1 |
| 12▲ | 546.09.070.000 Nordisk Enduro 1,60×21" | 1 | 32 | 490.32.011.000 | 1 |
| 13 | 510.09.073.000 | 1 | 40 | 570.11.052.300 23:11 | 1 |
| 14 | 510.09.075.000 | 1 | 40 | 570.11.052.200 30:10 | 1 |
| 15 | 510.09.074.000 3.00-21" MOTO-CROSS | 1 | 50 | 565.13.180.444 | 1 |

X = NACH BEDARF / AS REQUIRED

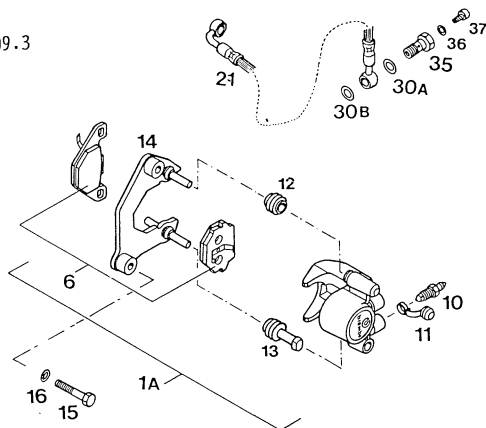
90-546.09.2

**BREMSSATTEL „BREMBO“ / CALIPER FRONT**

| Bild Fig. | Teilenummer Part number | Stk. Qty. | Bild Fig. | Teilenummer Part number | Stk. Qty. |
|-----------|-------------------------|-----------|-----------|-------------------------------|-----------|
| 1▲ | 545.13.201.144 | 1 | 16 | 0797 080003 | 2 |
| 2 | 545.13.201.000 | 1 | 17 | 0125 080003 | 2 |
| 3▲ | 546.13.222.044 | 1 | 21 | 502.13.029.200 1545 mm MX | 1 |
| 5▲ | 546.13.217.000 | 2 | 21 | 502.13.029.300 1575 mm Enduro | 1 |
| 6▲ | 546.13.216.000 | 2 | 30a | 420.13.226.000 10×16×1 | 1 |
| 7 | 0912 060123 | 2 | 30b | 420.13.026.000 10×16×1,5 | 1 |
| 8▲ | 546.10.041.000 | 2 | 35 | 502.13.025.100 | 1 |
| 9 | 545.13.209.044 | 1 | 36 | 502.13.026.000 | 1 |
| 10 | 545.13.214.000 | 1 | 37 | 0912 050083 | 1 |
| 11 | 545.13.215.000 | 1 | | | |
| 12▲ | 545.13.218.000 | 1 | | | |
| 13▲ | 545.13.219.000 | 1 | | | |
| 15 | 0933 080303 | 2 | | | |

X = NACH BEDARF / AS REQUIRED

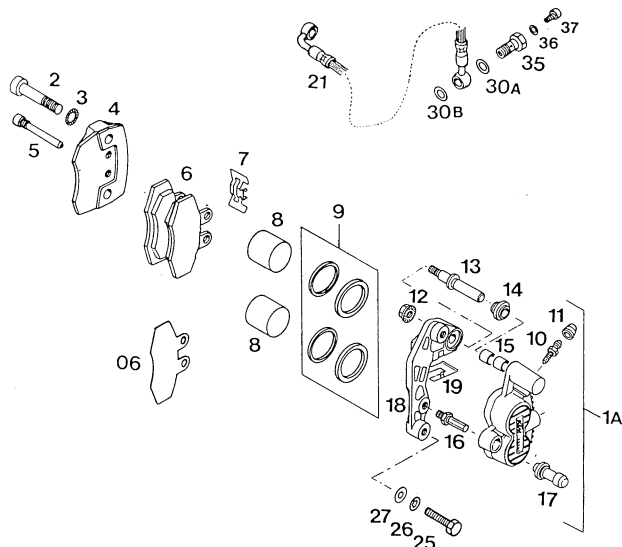
90-546.09.3

**BREMSSATTEL „BREMBO“ / CALIPER FRONT**

| Bild Fig. | Teilenummer Part number | Stk. Qty. | Bild Fig. | Teilenummer Part number | Stk. Qty. |
|-----------|-------------------------|-----------|-----------|-------------------------|-----------|
| 1a | 545.13.201.044 | 1 | 21 | 502.13.029.300 | 1 |
| 6 | 545.13.209.044 | 1 | | 1575 mm Enduro | |
| 10 | 545.13.214.000 | 1 | 30a | 420.13.226.000 | 1 |
| 11 | 545.13.215.000 | 1 | | 10x16x1 | |
| 12 | 545.13.218.000 | 1 | 30b | 420.13.026.000 | 1 |
| 13 | 545.13.219.000 | 1 | | 10x16x1,5 | |
| 14 | 545.13.222.000 | 1 | 35 | 502.13.025.100 | 1 |
| 15 | 565.03.087.000 | 2 | 36 | 502.13.026.000 | 1 |
| 16 | 0797 080003 | 2 | 37 | 0912 050083 | 1 |
| 21 | 502.13.029.200 | 1 | | | |
| | 1545mm MX | | | | |

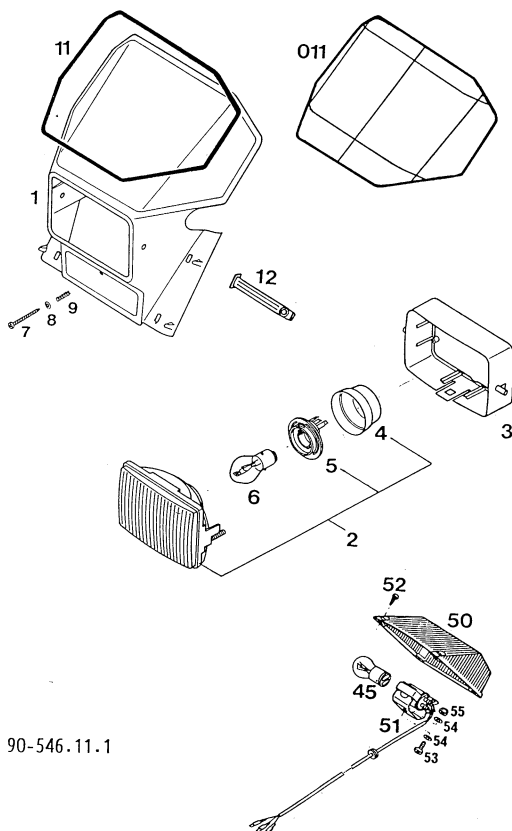
X = NACH BEDARF / AS REQUIRED

90-546.09.4

**BREMSSATTEL „GRIMECA“ / CALIPER FRONT**

| Bild Fig. | Teilenummer Part number | Stk. Qty. | Bild Fig. | Teilenummer Part number | Stk. Qty. |
|-----------|-------------------------|-----------|-----------|-------------------------|-----------|
| 1a | 565.13.201.644 | 1 | 12 | 565.13.216.000 | 1 |
| 2 | 0912 100453 | 2 | 13 | 565.13.217.000 | 1 |
| 3 | 360.03.014.200 | 2 | 14 | 565.13.218.000 | 1 |
| 4 | 565.13.202.400 | 1 | 15 | 565.13.220.000 | 2 |
| 5 | 565.13.210.400 | 2 | 16 | 565.13.221.000 | 1 |
| 6 | 565.13.209.544 | 1 | 17 | 565.13.219.000 | 1 |
| | Organ. 243 | | 18 | 565.13.222.000 | 1 |
| 6 | 565.13.209.444 | X | 19 | 565.13.223.000 | 1 |
| | Sinter 518 | | 21 | 502.13.029.300 | 1 |
| 06 | 565.13.206.400 | X | | 1575 mm Enduro | |
| | 1 mm | | 25 | 0931 080303 | 2 |
| 06 | 565.13.206.500 | X | 26 | 0797 080003 | 2 |
| | 2 mm | | 27 | 0125 080003 | 2 |
| 06 | 565.13.209.450 | X | 30a | 420.13.226.000 | 1 |
| | 3 mm | | | 10x16x1 | |
| 7 | 565.13.211.400 | 1 | 30b | 420.13.026.000 | 1 |
| 8 | 565.13.205.400 | 2 | | 10x16x1,5 | |
| 9 | 565.13.250.400 | 1 | 35 | 502.13.025.100 | 1 |
| 10 | 420.13.214.000 | 1 | 36 | 502.13.026.000 | 1 |
| 11 | 420.13.215.000 | 1 | 37 | 0912 050083 | 1 |

X = NACH BEDARF / AS REQUIRED

**SCHEINWERFER, RÜCKLICHT
HEAD A. REAR LIGHT**

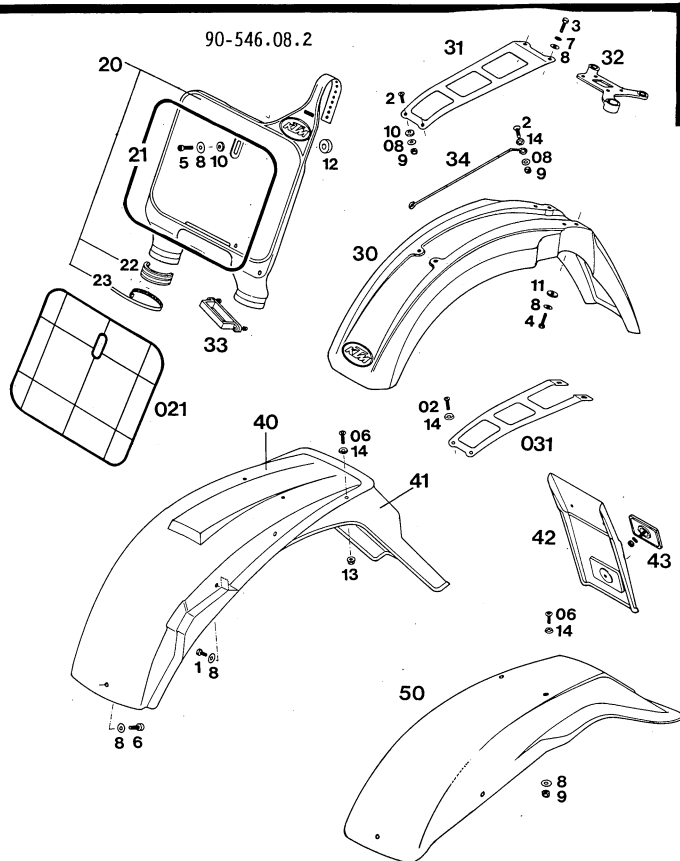
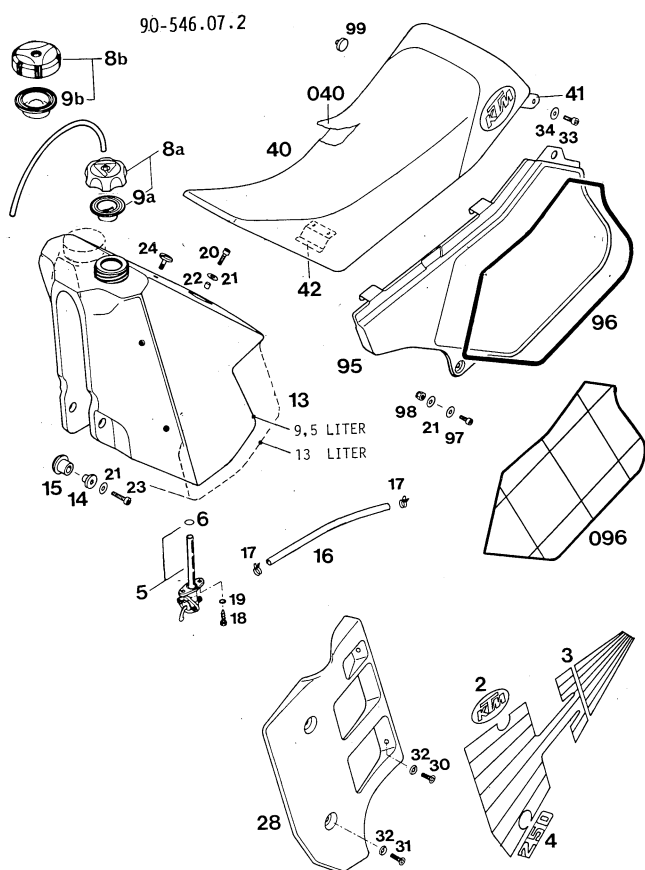
| Bild Fig. | Teilenummer Part number | Stk. Qty. | Bild Fig. | Teilenummer Part number | Stk. Qty. |
|-----------|-------------------------|-----------|-----------|-------------------------|-----------|
| 1▲ | 546.11.001.000 | 1 | 011▲ | 546.01.196.080 | 1 |
| 2 | 160.11.030.000 | 1 | | yellow | |
| 3 | 160.11.032.000 | 1 | 12 | 546.11.186.000 | 4 |
| 4 | 160.11.037.000 | 1 | 45 | 570.11.045.000 | 1 |
| 5 | 160.11.036.000 | 1 | | 12V 21/5W | |
| 6 | 441.11.038.000 | 1 | 50 | 565.11.041.000 | 1 |
| | 12V 35/35W | | 51 | 565.11.044.000 | 1 |
| 7 | 0981 350503 | 1 | 52 | 0981 290133 | 4 |
| 8 | 0125 040003 | 1 | 53 | 0985 040103 | 1 |
| 9 | 440.11.035.000 | 1 | 54 | 0125 040003 | 2 |
| 11▲ | 546.01.196.000 | 1 | 55 | 0985 040003 | 1 |

X = NACH BEDARF / AS REQUIRED

90-546.11.1

ALLE ÜBRIGEN AUSFÜHRUNGEN
All the other executionsMICROFICHE 250/300 '90 Art.Nr. 203.05
2.90

TANK, SITZBANK / TANK, SEAT



| Bild Fig. | Teilenummer Part number | Stk. Qty. |
|-----------|-------------------------|-----------|
| 2▲ | 546.07.002.000 | 2 |
| 3▲ | 546.07.003.000 | 1 |
| | L/S | |
| -▲ | 546.07.103.000 | 1 |
| | R/S | |
| 4 | 545.07.103.250 | 1 |
| | L/S "250" | |
| 4▲ | 546.07.103.300 | 1 |
| | L/S "300" | |
| - | 545.07.003.250 | 1 |
| | R/S "250" | |
| -▲ | 546.07.003.300 | 1 |
| | R/S "300" | |
| 5 | 550.07.005.300 | 1 |
| | "OFF-ON" | |
| 5 | 550.07.005.200 | 1 |
| | "OFF-ON-RES" | |
| 6 | 550.07.006.200 | 1 |
| 7 | 310.07.107.001 | 0,32m |
| 8a | 490.07.008.044 | 1 |
| 8b | 560.07.008.144 | 1 |
| 9a | 490.07.009.000 | 1 |
| 9b | 560.07.009.100 | 1 |
| 13▲ | 546.07.013.000 | 1 |
| | 9,5 Liter | |
| 13▲ | 546.07.013.100 | 1 |
| | 13 Liter | |
| 14▲ | 546.35.036.000 | 2 |
| 15▲ | 564.01.040.000 | 2 |
| 16 | 580.07.016.001 | 0,16m |
| 17 | 580.07.117.000 | 2 |
| 18 | 0676 550223 | 2 |
| 19 | 0797 050003 | 2 |
| 20 | 0912 060203 | 1 |
| 21 | 0021 060003 | 7 |
| 22 | 544.31.032.050 | 1 |
| 23 | 0912 060253 | 2 |
| 24 | 545.07.011.000 | 1 |
| 28▲ | 546.35.028.000 | 1 |
| | L/S | |
| -▲ | 546.35.029.000 | 1 |
| | R/S | |

| Bild Fig. | Teilenummer Part number | Stk. Qty. |
|-----------|-------------------------|-----------|
| 30 | 0991 060163 | 4 |
| 31 | 0991 060203 | 4 |
| 32 | 400.06.006.000 | 8 |
| 33 | 0912 060123 | 2 |
| 34 | 0021 060003 | 2 |
| 40▲ | 546.07.040.000 | 1 |
| | 430mm | |
| 40▲ | 546.07.040.100 | 1 |
| | 510mm | |
| 040▲ | 546.07.040.050 | 1 |
| | 430mm | |
| 040▲ | 546.07.040.150 | 1 |
| | 510mm | |
| 41▲ | 546.07.041.000 | 1 |
| | L/S | |
| - | 546.07.141.000 | 1 |
| | R/S | |
| 42▲ | 546.07.042.000 | 1 |
| 95▲ | 546.08.041.000 | 1 |
| | L/S | |
| -▲ | 546.08.075.000 | 1 |
| | R/S MX, D-XC, E-XC | |
| -▲ | 546.08.475.000 | 1 |
| | R/S E-GS | |
| 96▲ | 546.08.096.000 | 1 |
| | L/S red | |
| -▲ | 546.08.196.000 | 1 |
| | R/S red | |
| 096▲ | 546.08.096.051 | 1 |
| | L/S green | |
| -▲ | 546.08.196.051 | 1 |
| | R/S green | |
| 096▲ | 546.08.096.080 | 1 |
| | L/S yellow | |
| -▲ | 546.08.196.080 | 1 |
| | R/S yellow | |
| 97 | 0912 060163 | 2 |
| 98 | 0985 060003 | 2 |
| 99 | 543.08.042.000 | 1 |

X = NACH BEDARF / AS REQUIRED

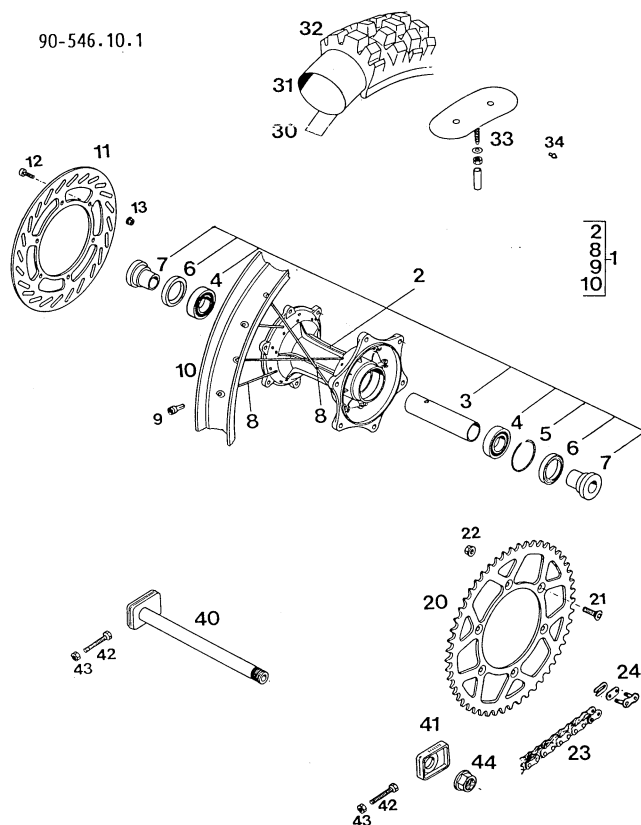
KOTFLÜGEL / FENDERS

| Bild Fig. | Teilenummer Part number | Stk. Qty. |
|-----------|-------------------------|-----------|
| 1 | 0933 060103 | 2 |
| 2 | 0966 050163 | 2(3) |
| 02 | 0966 050203 | 2 |
| 3 | 0933 050203 | 2 |
| 4 | 0933 060253 | 4 |
| 5 | 0912 060203 | 1 |
| 6 | 0912 060163 | 1 |
| 06 | 0991 060163 | X |
| 6 | 0991 060253 | X |
| 7 | 0797 060003 | 2 |
| 8 | 0021 060003 | 10 |
| 08 | 0021 050003 | X |
| 9 | 0985 050003 | X |
| 10 | 510.05.082.100 | 3 |
| 11 | 510.05.082.200 | 4 |
| 12 | 510.08.077.000 | 1 |
| 13 | 565.09.064.000 | 2 |
| 14 | 400.06.006.000 | X |
| 20▲ | 546.01.095.000 | 1 |
| 21▲ | 546.01.096.000 | 1 |
| 021▲ | 546.01.096.051 | 1 |
| | green | |
| 22▲ | 546.01.097.000 | 2 |
| 23▲ | 546.01.098.000 | 2 |
| 30▲ | 546.08.010.000 | 1 |
| 31 | 570.08.009.000 | 1 |
| 031 | 581.08.109.000 | 1 |
| | E-GS | |
| 32 | 543.08.019.000 | 1 |
| 33▲ | 546.01.093.000 | 1 |
| 34▲ | 545.01.092.000 | 1 |
| 40▲ | 546.08.014.000 | 1 |
| 41▲ | 546.08.015.000 | 1 |
| | E-GS | |
| 42 | 490.08.216.000 | 1 |
| 43 | 510.12.080.000 | 1 |
| 50 | 502.08.113.000 | 1 |

X = NACH BEDARF / AS REQUIRED

HINTERRAD / REAR WHEEL

90-546.10.1

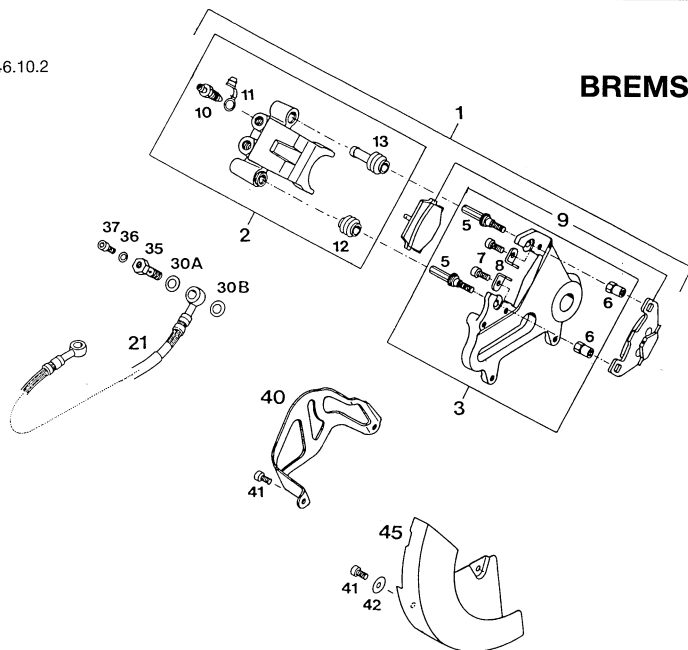


| Bild Fig. | Teilenummer Part number | Stk. Qty. | Bild Fig. | Teilenummer Part number | Stk. Qty. |
|-----------|----------------------------|--------------|-----------|----------------------------|--------------|
| 1▲ | 546.10.001.044 2,15×19" | 1 | 21 | 545.10.052.000 | 6 |
| | Excel | | 22 | 543.10.086.000 | 6 |
| | MX | | 23 | 500.10.065.000 | 1 |
| 1▲ | 546.10.201.044 2,50×18" | 1 | 23 | 500.10.065.001 per m | X |
| | Nordisk | | 24 | 500.10.066.000 | 1 |
| | Enduro | | 23 | 530.10.065.118 O-Ring | 1 |
| 2▲ | 546.10.010.044 | 1 | 24 | 530.10.066.000 O-Ring | 1 |
| 3 | 565.10.011.000 | 1 | 30 | 520.10.073.000 | 1 |
| 4 | 0625 060058 | 2 | 31 | 540.10.075.000 | 1 |
| 5 | 565.10.041.000 | 1 | | 4.00/4,50/130-18" | |
| 6 | 0760 324772 | 2 | 31▲ | 546.10.075.000 | 1 |
| 7▲ | 546.10.016.000 | 2 | | 110/90-19" | |
| 8▲ | 546.10.071.000 19" | 36 | 32 | 540.10.074.000 | 1 |
| 8▲ | 546.10.571.000 18" | 36 | | 4.50-18" Moto Cross | |
| 9 | 565.09.072.000 | 36 | 32 | 540.10.074.100 | 1 |
| 10▲ | 546.10.070.100 2,15×19" | 1 | | 4.50-18" Multi Cross | |
| | Excel | | 32 | 543.10.074.606 | 1 |
| | MX | | | 140/80-18" MXE II | |
| 10▲ | 546.10.070.000 2,15×19" | X | 32▲ | 546.10.074.000 | 1 |
| | Nordisk | | | 110/90-19" Dunlop | |
| | MX | | 33 | 540.10.100.100 | 2 |
| 10 | 565.10.070.000 2,50-18" | 1 | 34 | 550.09.099.100 | 10 |
| | Nordisk | | 40 | 502.10.085.000 | 1 |
| | Enduro | | 41 | 565.10.084.000 | 1 |
| 11▲ | 546.10.060.000 | 1 | 42 | 0933 080453 | 2 |
| 12 | 0984 060203 | 6 | 43 | 0934 080003 | 2 |
| 13 | 543.10.086.000 | 6 | 44 | 543.10.099.000 | 1 |
| 20▲ | 546.10.051.048 48-Z | 1 | | | |
| 20▲ | 546.10.051.050 50-Z | 1 | | | |

X = NACH BEDARF / AS REQUIRED

90-546.10.2

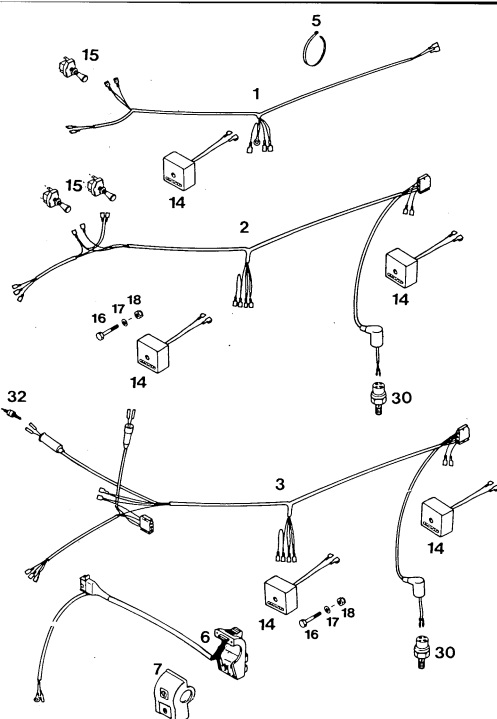
BREMSSATTEL „BREMBO“ / CALIPER REAR



| Bild Fig. | Teilenummer Part number | Stk. Qty. | Bild Fig. | Teilenummer Part number | Stk. Qty. |
|-----------|----------------------------|--------------|-----------|----------------------------|--------------|
| 1▲ | 546.13.301.044 | 1 | 21▲ | 546.13.027.000 | 1 |
| 2▲ | 546.13.301.000 | 1 | 30a | 420.13.226.000 | 1 |
| 3▲ | 546.10.040.044 | 1 | | 10×16×1 | |
| 5▲ | 546.13.217.000 | 2 | 30b | 420.13.026.000 | 1 |
| 6▲ | 546.13.216.000 | 2 | | 10×16×1,5 | |
| 7 | 0912 060123 | 2 | 35 | 502.13.025.100 | 1 |
| 8▲ | 546.10.041.000 | 2 | 36 | 502.13.026.000 | 1 |
| 9 | 545.13.209.044 | 1 | 37 | 0912 050083 | 1 |
| 10 | 545.13.214.000 | 1 | 40▲ | 546.13.085.000 | 1 |
| 11 | 545.13.215.000 | 1 | 41 | 0912 060123 | 4 |
| 12 | 545.13.218.000 | 1 | 42 | 0021 060003 | 2 |
| 13 | 545.13.219.000 | 1 | 45▲ | 546.13.081.000 | 1 |

X = NACH BEDARF / AS REQUIRED

90-546.11.3

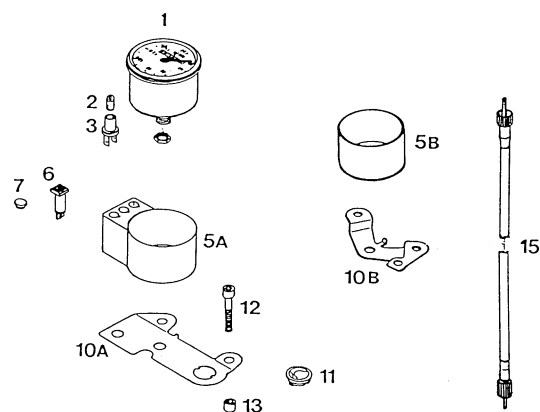


KABELSTRANG / WIRING HARNESS

| Bild Fig. | Teilenummer Part number | Stk Qty | Bild Fig. | Teilenummer Part number | Stk Qty |
|-----------|---------------------------------------|---------|-----------|-------------------------|---------|
| 1▲ | 546.11.075.000 E-XC I, USA, SA, GB | 1 | 14 | 544.11.034.000 | 1(2) |
| 2▲ | 546.11.175.000 E-XC II SF, AUS, NL | 1 | 15 | 550.11.599.000 | 1(2) |
| 3▲ | 546.11.275.000 E-XC III B, E, S | 1 | 16 | 0931 060353 | 1(2) |
| 5 | 440.11.076.180 | X | 17 | 0125 060003 | 1(2) |
| 6▲ | 546.11.270.000 | 1 | 18 | 0985 060003 | 1(2) |
| 7 | 570.11.070.050 | 1 | 30 | 420.13.121.000 | 1 |
| | | | 32 | 510.11.050.000 | 1 |

X = NACH BEDARF / AS REQUIRED

88-500.11.9

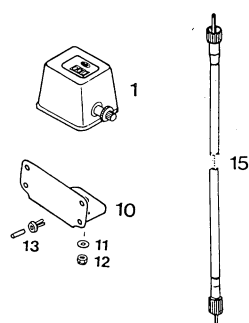


X = NACH BEDARF / AS REQUIRED

TACHOANLAGE / SPEEDOMETER

| Bild Fig. | Teilenummer Part number | Stk Qty. | Bild Fig. | Teilenummer Part number | Stk Qty. |
|-----------|-------------------------|----------|-----------|-------------------------|----------|
| 1 | 550.11.080.000 | 1 | 6 | 580.11.021.000 | 1 |
| 2 | 310.11.025.000 | 1 | | Blue 12V 250/350 | |
| 2 | 441.11.025.000 | 1 | 7 | 361.11.021.000 | X |
| | 6V 0.6W | | 10a | 580.11.030.000 | 1 |
| | 12V 2W | | | E-GS | |
| 3 | 330.11.069.000 | 1 | 10b | 570.11.030.000 | 1 |
| 5a | 580.11.068.000 | 1 | | E-XC | |
| | E-GS | | 11 | 160.11.020.000 | X |
| 5b | 570.11.068.000 | 1 | 12 | 0912 080403 | 2 |
| | E-XC | | 13 | 571.03.225.000 | 2 |
| 6 | 502.11.064.000 | 1 | 15 | 565.11.088.400 | 1 |
| | yellow 6V 125 | | | 1020mm | |
| 6 | 446.11.264.000 | 1 | 15 | 565.11.088.500 | 1 |
| | yellow 12V 250/350 | | | 1025mm | |
| 6 | 400.11.021.000 | 1 | | | |
| | Blue 6V 125 | | | | |

90-546.11.9



MEILENZÄHLER / ODOMETER

| Bild Fig. | Teilenummer Part number | Stk Qty. |
|-----------|-------------------------|----------|
| 1 | 580.11.180.000 | 1 |
| 10 | 580.11.130.000 | 1 |
| 11 | 0125 040003 | 2 |
| 12 | 0985 040003 | 1 |
| 13 | 570.13.071.000 | 4 |
| 15 | 565.11.088.500 | 1 |
| | 1025mm | |

X = NACH BEDARF / AS REQUIRED